

CorkSport Front Strut Tower Bar

2014+ Mazda 3 & Mazda 6



Thank you for purchasing the CorkSport FSTB for the 2014+ Mazda 3 & Mazda 6. Constructed from polished 2024-T4 aluminum, mild steel, and stainless steel hardware; the CorkSport FSTB is sure to impress behind the wheel and under the hood. Please let us know what you think by submitting a review at:

<http://corksport.com/2014-mazda-3-front-strut-tower-bar.html>

Pre-Installation Notes:



Make sure your vehicle is sitting on a level surface prior to starting installation. Performing this installation with the vehicles suspension articulated may cause the struts to move or bind when the strut/strut tower nuts are removed.



These instructions were written for reference only and the use of a factory service manual is recommended. Please read these instructions thoroughly prior to starting installation.



These installation instructions were written using a 2014 Mazda 3. Installation for 2014+ Mazda 6 will be similar.

Materials and Time:



General Info.

Part #: AXM-3-020
Time Est: 15-45 minutes
Wrench Rating: 1/5



Tooling List

14mm Socket or End Wrench
8mm Allen Wrench
Torque Wrench



Parts List

One (1) Assembled CorkSport Strut Tower Bar

Detailed Instructions

1. Install the CorkSport FSTB

- a) Loosen the stainless steel hardware with the 8mm Allen wrench and 14mm wrench, but do not remove it. This will make aligning the studs into the brackets easier. **Shown in Figure 1a.**



Figure 1a

Front Stud Hole

Rear Stud Hole

Detailed Instructions

1. Install the CorkSport FSTB (continued)

- b) Remove the two 14mm nuts that hold the strut in the tower. Remove only the nuts circled in red shown in **Figure 1b** & **Figure 1c**.

Driver's Side →



Figure 1b

Passenger's Side →

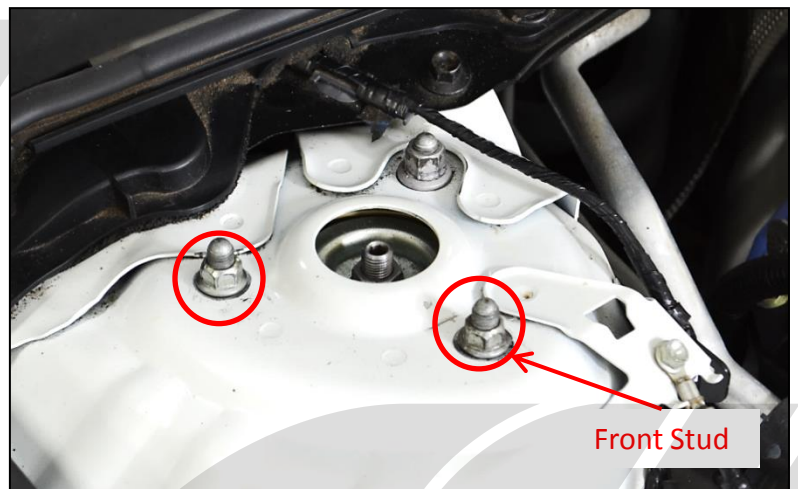


Figure 1c

Detailed Instructions

1. Install the CorkSport FSTB (continued)

- c) Tighten the two 14mm nuts (23-28 ft.lbs) that hold the strut bar brackets on the tower. **Figure 1d & Figure 1e.**

Driver's Side →



Figure 1d

Passenger's Side →

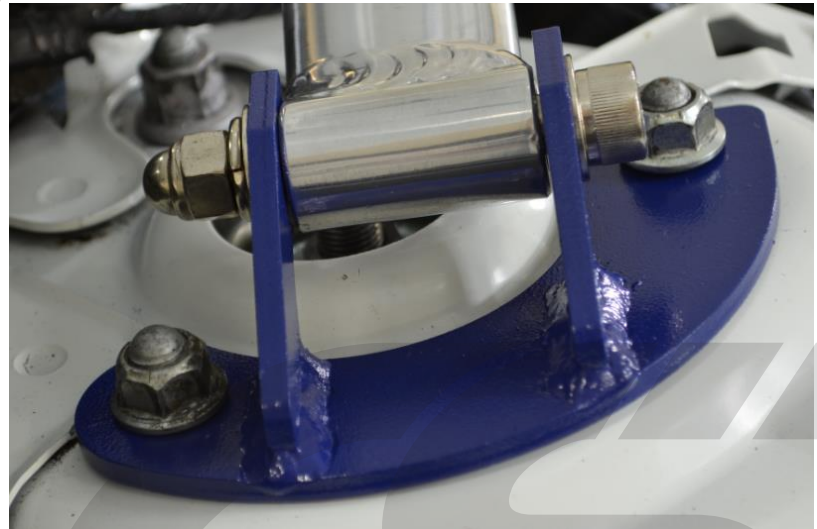


Figure 1e

- d) Tighten the stainless steel hardware (23-28 ft.lbs) on both the driver and passenger sides.

Detailed Instructions

1. Install the CorkSport FSTB (continued)



This completes the installation of your CorkSport FSTB. Re-torque the nuts after a few miles of driving and enjoy!

What's Next:

[CORKSPORT 2014+ Mazda 3 SkyActiv Power Series Short Ram Intake](#)



One of the easiest and most beneficial performance enhancements you can do for your vehicle, the CorkSport Power Series Short Ram Intake replaces your factory airbox with an open intake system allowing more air into the intake chamber. Engineered with exacting tolerances, the CorkSport SkyActiv Short Ram Intake includes our precision machined MAF housing made from billet aluminum, a durable dry flow air filter and custom reinforced silicone connector. In initial testing with the 2.0 Liter SkyActiv engine, the CorkSport Short Ram Intake netted peak gains of +5 HP and +6 lb torque at the wheels.

[CORKSPORT LED Light Kit for 2014+ Mazda 3](#)

Brighten up your interior with the CorkSport LED kit. CorkSport's LED light kit replaces the incandescent bulbs for the dome lights, vanity visor lights, door lights, and trunk light. The lights are simple to install, with no custom adapters or wiring required.

