

CorkSport

MAZDA PERFORMANCE



Installation Instructions for CorkSport 2007-2009 Mazda Cx-7 Stainless Braided Brake Line Kit

Contents

- 4 Brake Lines (like image above)
- 5 Page Installation Instructions

Tools required

- 8mm Flare Wrench
- 10mm Flare Wrench
- 12mm Flare Wrench
- Brake Fluid
- Floor Jack
- Jack stands
- Spill Pan/Container

DANGER: Installation of the brake lines should be done by a professional mechanic. Failure of the brake system could lead to significant property damage and/or death. CorkSport nor any of its employees or owners will not be liable for the outcome of the installation from using these instructions. The installation instructions are for reference only.

Thank you for your purchase. If you have any questions please call Cork Sport at 360 260 CORK

Installation of the front brake lines

Step 1: Jack up vehicle and secure it on jack stands on a flat level surface.

Step 2: Remove front wheel and locate the front brake line.

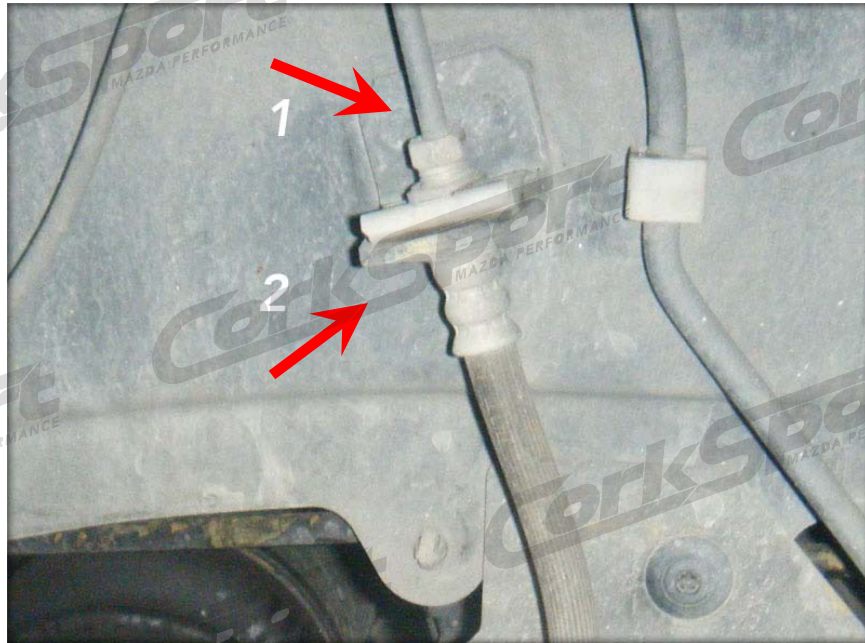
Step 3: Place a pan/container under work area to catch brake line fluid that will drain from the caliper. *Warning: Be very careful not to spill/splash any brake fluid on car paint. If incident occurs rinse with water immediately to avoid damage to cars paint.*

Step 4: Remove the front brake line from the caliper. This will require a 12mm wrench to remove the line from the caliper. (#1 in the picture below). Once the fitting is loose remove the line holder clip. (#2 in the picture below).



Step 5: Locate the junction for the brake line to the car body. It will take a 10mm wrench to loosen the fitting. (#1 in the picture below) Once the fitting is loose remove the line holder clip. (#2 in the picture below).

Thank you for your purchase. If you have any questions please call Cork Sport at 360 260 CORK



Step 6: Locate the front line in the brake line kit it will be one of the two longer lines. The lines are the same for left and right.

Step 7: Install the new CorkSport brake line to the caliper with the 12mm wrench and two new provided copper crush washers. Tighten the bolt to 12.6 to 15.8 ft/lb. Make sure the brake line follows the same path as the original.

Step 8: Connect the new brake line to the original metal hard line and tighten by hand.

Step 9: Take the 10mm wrench and tighten the two lines together. Slide the line holder clip to hold the new line in place in the bracket.

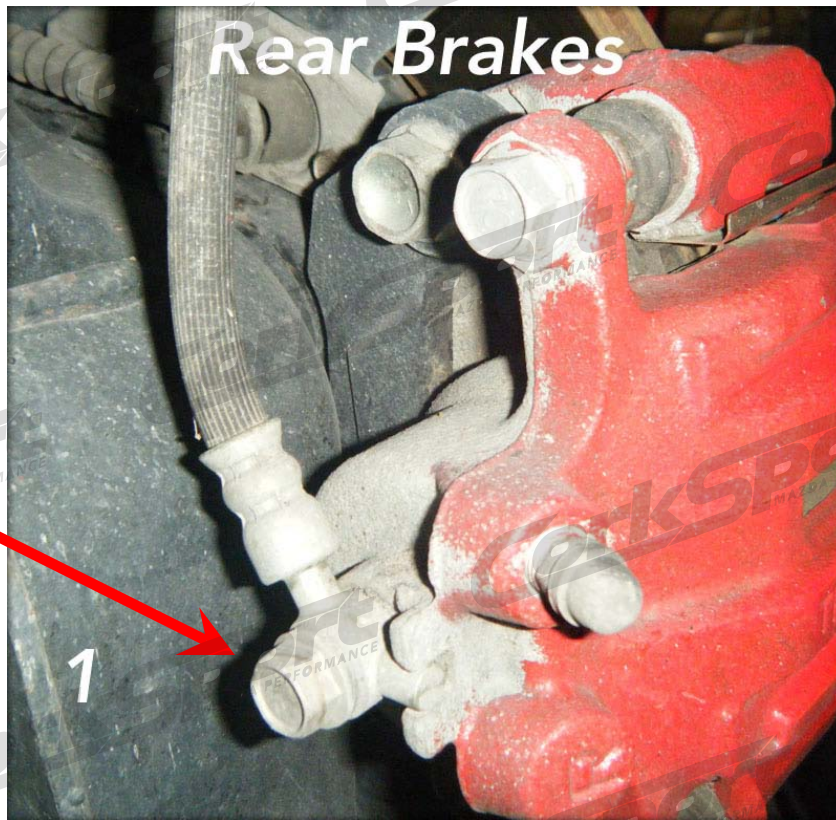
Step 10: Repeat the instructions for the other front brake line.

Installation of the rear brake lines

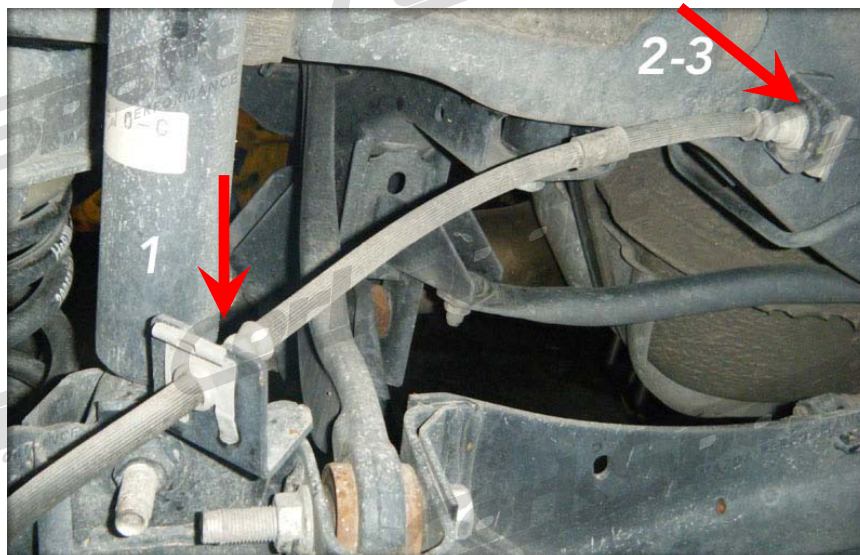
Step 1: Place a pan/container under work area to catch brake line fluid that will drain from the caliper. *Warning: Be very careful not to spill/splash any brake fluid on car paint. If incident occurs rinse with water immediately to avoid damage to cars paint.*

Step 2: Remove the front brake line from the caliper. This will require a 12mm wrench to remove the line from the caliper. (#1 in the picture below).

Thank you for your purchase. If you have any questions please call Cork Sport at 360 260 CORK



Step 3: Remove the brake line from the holder, (#1 in the picture below).



Step 4: Locate the junction for the brake line to the car body. It will take a 10mm wrench to loosen the fitting. (#2 in the picture above) Once the fitting is loose, remove the line holder clip (#3 in the picture above).

Step 5: Locate the replacement CorkSport brake line in the package. At this point, you should only have two lines, of equal length remaining.

Thank you for your purchase. If you have any questions, please call Cork Sport at 360 260 CORK

Step 6: Install the new CorkSport brake line to the caliper with the 12mm wrench and two new provided copper crush washers. Tighten the line to 12.6 to 15.8 ft/lb. Make sure the brake line follows the same path as the original.

Step 7: Connect the new brake line to the original metal hard line and tighten by hand.

Step 8: Take the 10mm wrench and tighten the two lines together. Slide the line holder clip to hold the new line in place in the bracket.

Step 9: Repeat the instructions for the other rear brake line.

Step 10: You will need to bleed the brake system. To bleed the brake system there are two methods.

Method #1 is to get a two foot section of 5/32 diameter hose and a 1 liter plastic bottle. Put the hose on the end of the bleed screw. Put the other end of the hose in the 1 liter bottle. Fill the bottle with enough brake fluid to submerge the end of the hose. Loosen the brake bleed screw and make sure the hose stays attached to the end of it. Pump the brake pedal in the car until there are no bubbles coming from the hose in the 1 liter bottle. Tighten the bleed screw then remove the rubber hose. Check the brake fluid level in the master cylinder and keep it at the full line after bleeding each caliper.

Method #2 requires two people, a two foot section of 5/32 diameter hose, and a 1 liter plastic bottle. Put the rubber hose on the bleed screw and the other end in the 1 liter bottle. Have the extra person pump the brake pedal until there is pedal pressure. Have the extra person hold the pedal with pressure while you loosen the bleed screw. The pedal will go to the floor. Have the extra person hold the pedal to the floor until you tighten the bleed screw. Repeat the procedure 3 times per caliper. Check the brake fluid level and keep it at the full line after bleeding each caliper.

Thank you for your purchase. If you have any questions please call Cork Sport at 360 260 CORK