

CorkSport Performance

AXO-6-958 Manual Transmission Shifter Bushings

Installation Instructions for the CorkSport Performance Shifter Bushings for 2019+ Mazda 3 with Manual Transmission

Written By: Cody Dunton



INTRODUCTION

In this installation guide we have provided step by step instructions to install the CorkSport Performance Shifter Bushings.

TOOLS:

- Trim Removal Tool (1)
- 10mm Socket - Deep (1)
- 12mm Socket - Deep (1)
- 3/8" Ratchet (1)
- Flathead Screwdriver (1)

PARTS:

- CorkSport Shifter Bushings (4)

Step 1 — Getting Started



- First and foremost; **THANK YOU** for becoming a part of the CorkSport Family. We hope to bring you the highest level of Parts, Customer Service, & Support
- ⓘ How To Use These Instructions: The instruction format will relate colored marking in the image to the color dot in the text to the right of the image
- The vehicle used in these instructions was a 2019 Mazda 3. Other models with a manual transmission will be similar.

Step 2 — Remove the Shift Knob



- Start by removing the shift knob by unscrewing it counter-clockwise from the shifter

Step 3 — Remove the Shift Panel - Part 1



- Place some painters tape underneath the back edge of the shift panel to protect the trim
- Using a trim removal tool, pry up in the locations shown to release the rear clips
- Lift up the back and sides of the trim panel to release the remaining clips that are in this location
- ⚠ Ensure that the trim panel is not moved upward too far as there is wiring connected to the panel
- After those clips are released, lift the shift boot off of the shifter

Step 4 — Remove the Shift Panel - Part 2



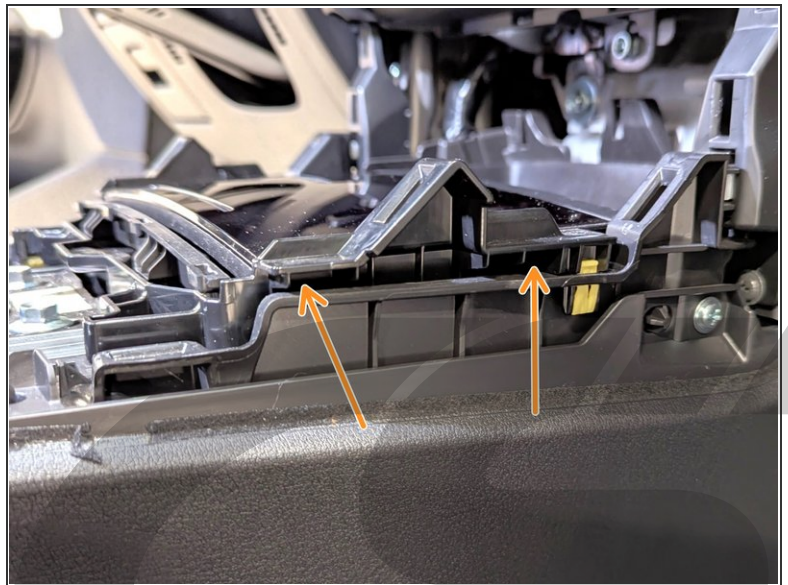
- With the back of the panel lifted, pull rearward to release the clips holding the front of the panel on each side
 - ⚠ Ensure that the trim panel is not moved rearward too far as there is wiring connected to the panel that will be removed in the next step
- Lift up the back of the trim panel and unplug the two connectors by depressing the tab that is on the forward facing side

Step 5 — Remove the Front Console Panel



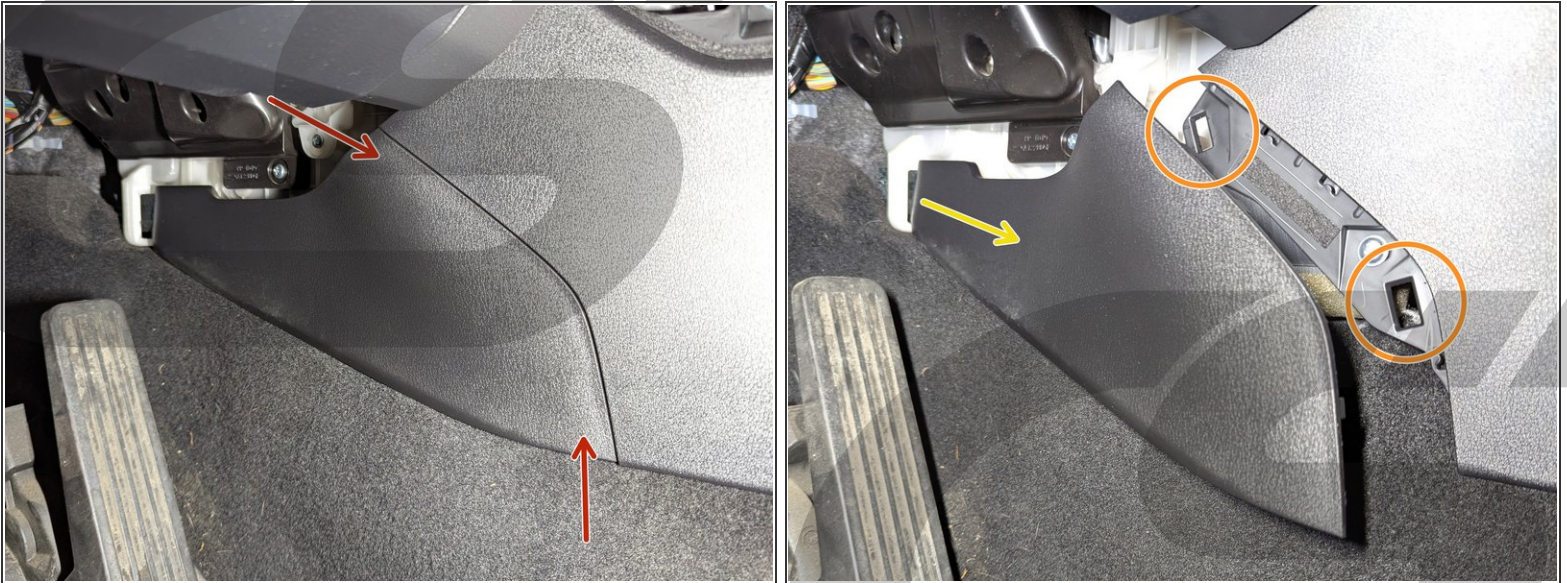
- Remove the front console panel by prying in the locations shown to release the clips on each side
- The second picture shows a side view of where the clips are for reference

Step 6 — Remove the Cup Holder



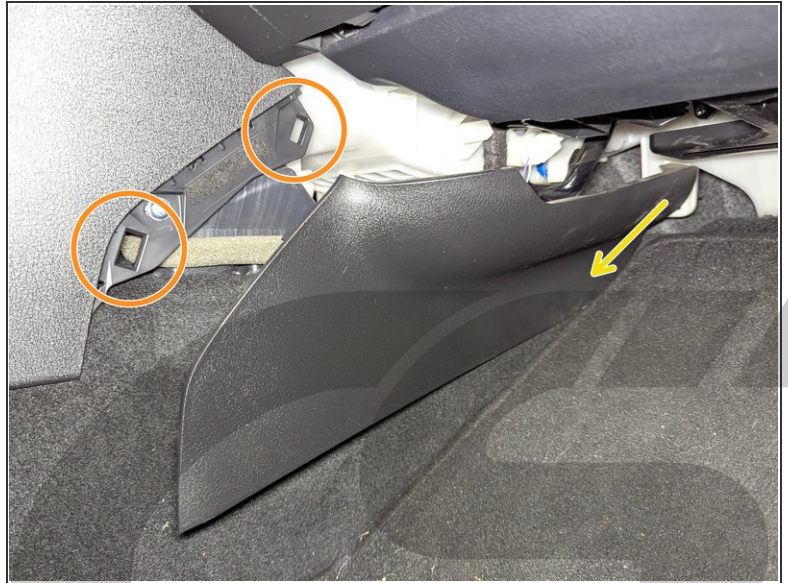
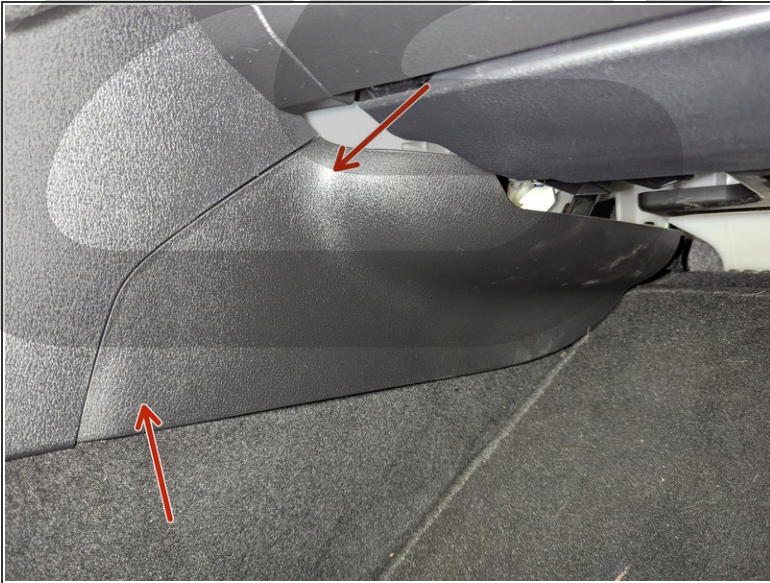
- Remove the cup holder by prying up on the edge of the panel in the locations shown
- The second picture shows a side view of where to pry to release the clips

Step 7 — Remove the Driver's Side Panel



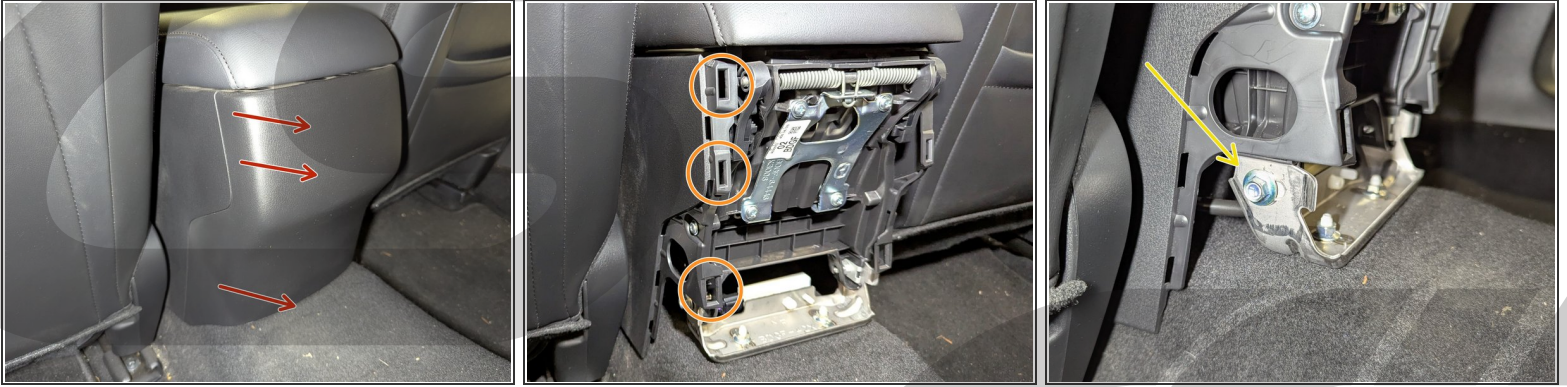
- Remove the side panel on the driver's side by prying out in the locations shown to release the clips
- The second picture shows where the clips are attached
- Slide the tab out of the slot in the direction shown

Step 8 — Remove the Passenger's Side Panel



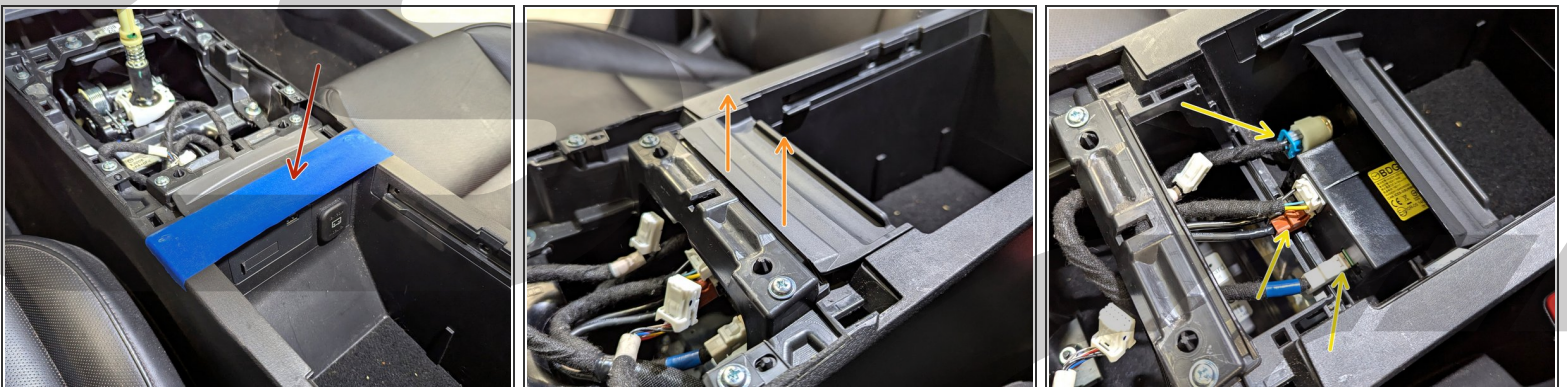
- Remove the side panel on the passenger's side by prying out in the locations shown to release the clips
- The second picture shows where the clips are attached
- Slide the tab out of the slot in the direction shown

Step 9 — Remove the Rear Console Panel



- ① Slide the seats forward to gain better access to the parts in the following steps
- Remove the rear console panel by prying outward in the locations shown starting at the bottom and working up
 - The second picture shows where the clips are attached
- Repeat the same process on the opposite side of the panel to release the clips
- Using a 10mm socket remove the bolt on each side of the bracket shown

Step 10 — Remove the USB Panel



- Discard the tape protecting the trim if used in an earlier step
- Remove the USB panel by prying up in the location shown
- Disconnect the 5 connectors that are plugged into the back of the panel by depressing the locking tabs and pulling out the connector

Step 11 — Remove the Console



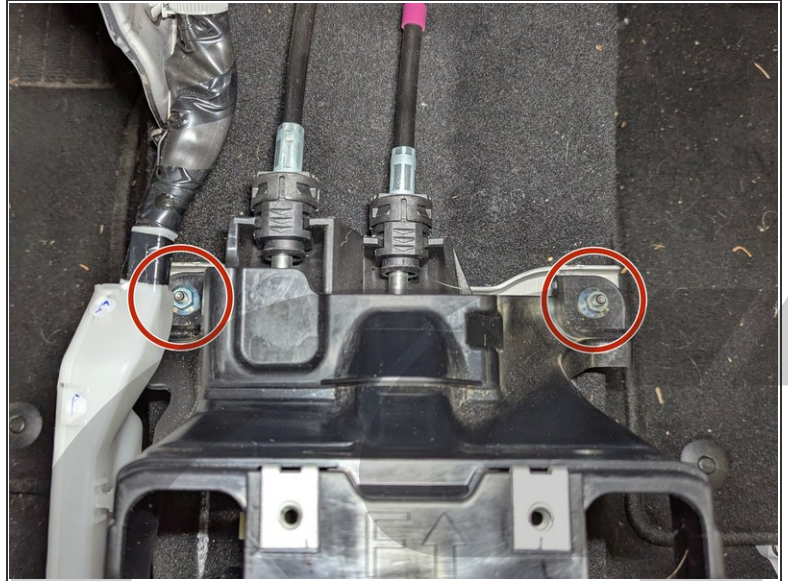
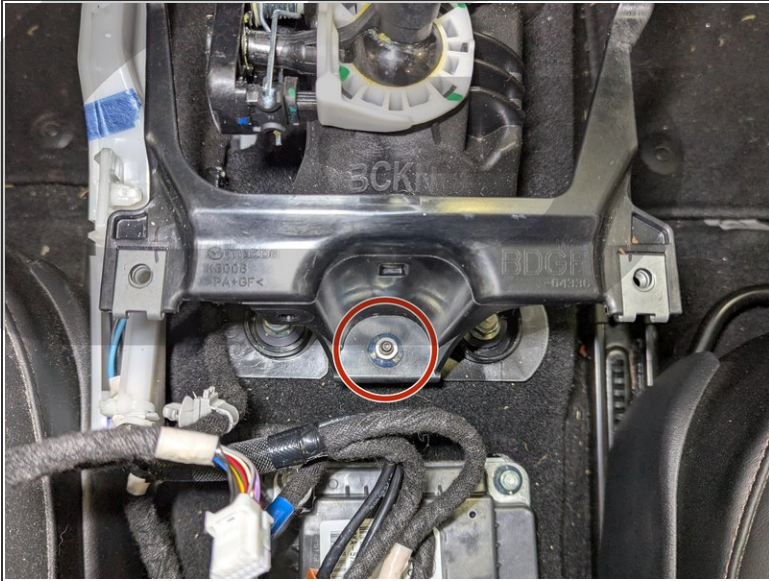
- Remove the small piece of carpet at the bottom of the storage compartment
- Unscrew the six 10mm bolts in the locations circled
- Move the console towards the rear of the car to release the clips holding it to the dash
- The console should now be free to remove from the car

Step 12 — Remove the Harness Clips



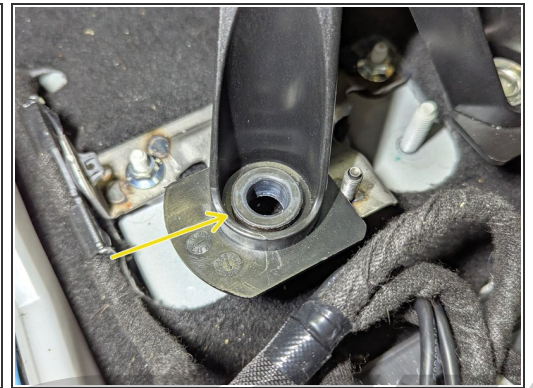
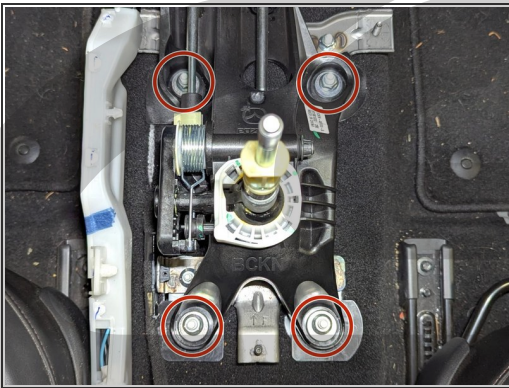
- Release the 2 clips that are holding the wiring harness to the console bracket by using a screwdriver to release the tabs from the backside as shown in the second picture
- Using the same process, remove the clip holding the wiring harness shown

Step 13 — Remove the Console Bracket



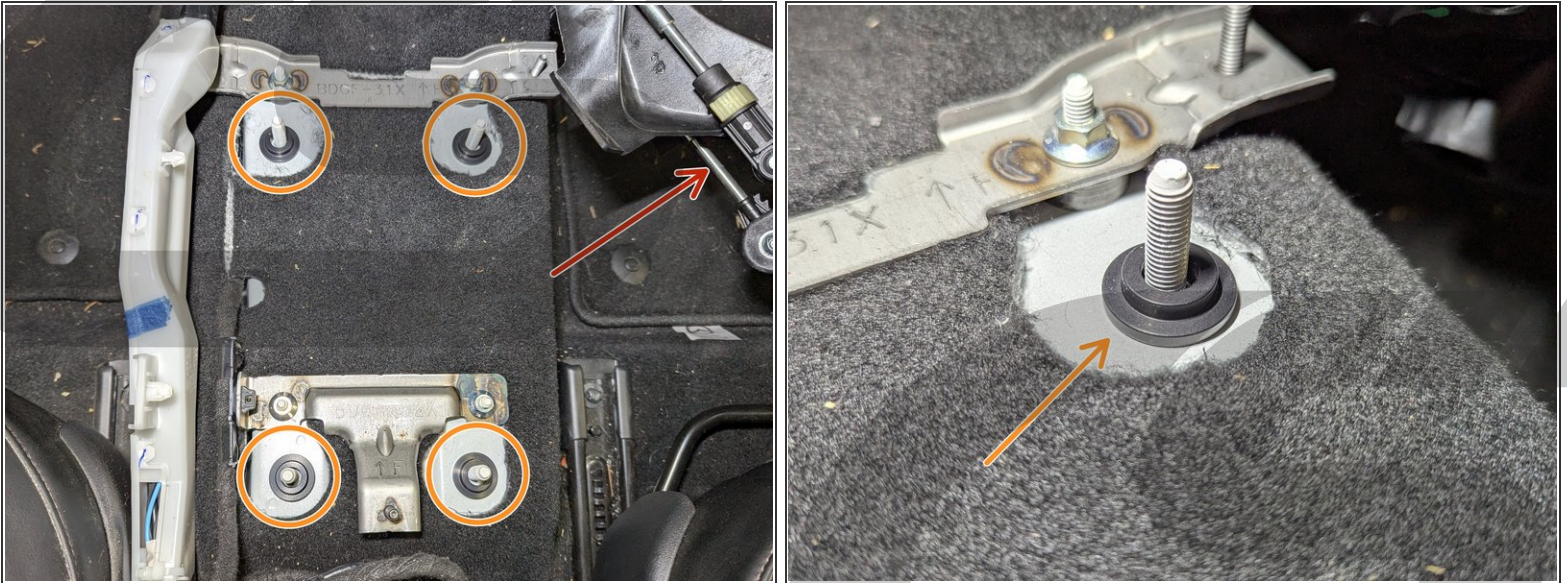
- Remove the console bracket by unscrewing the three 10mm nuts circled

Step 14 — Remove the Stock Shifter Bushings



- Remove the four 12mm nuts securing the shifter
- Using a flathead screwdriver pry out the metal insert that is in each of the 4 mounting positions
- Remove the rubber bushing that is in each of the 4 mounting positions

Step 15 — Install the CorkSport Shifter Bushings - Part 1



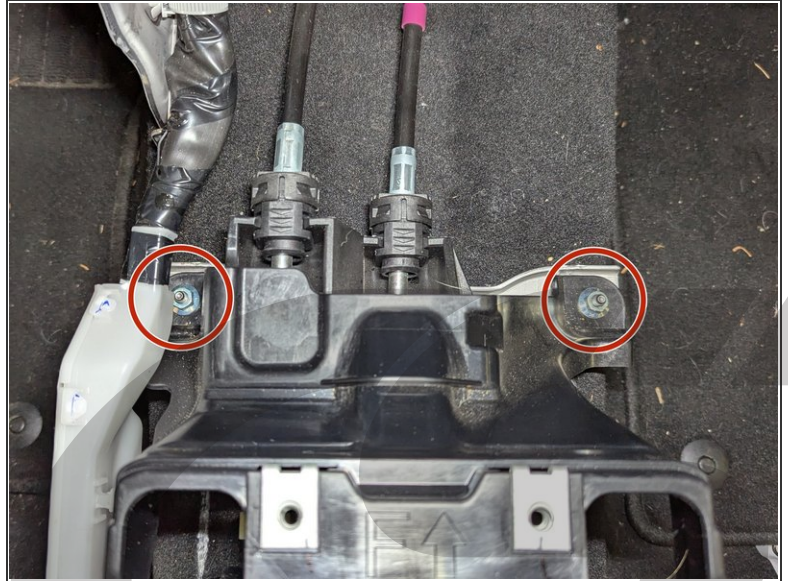
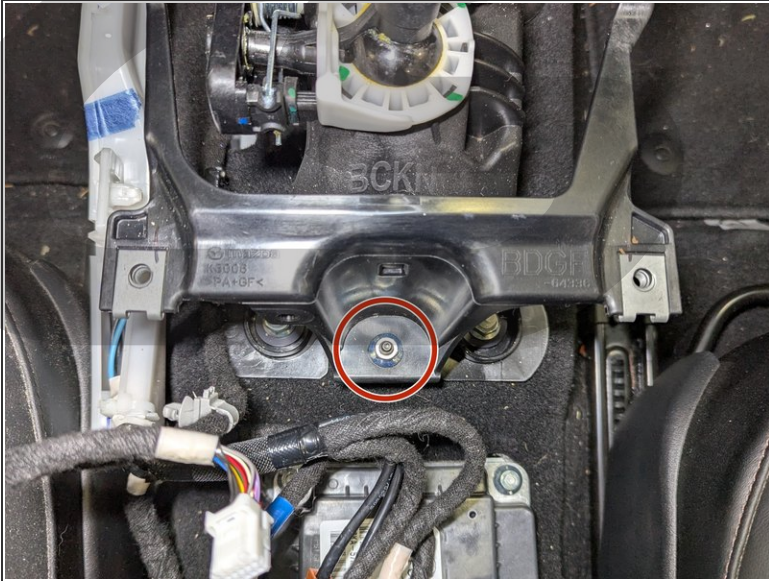
- Move the shifter out of the way to the passenger side
- Place the 4 CorkSport Shifter Bushings over the studs, that do not have the CS logo, in the orientation shown in the second picture

Step 16 — Install the CorkSport Shifter Bushings - Part 2



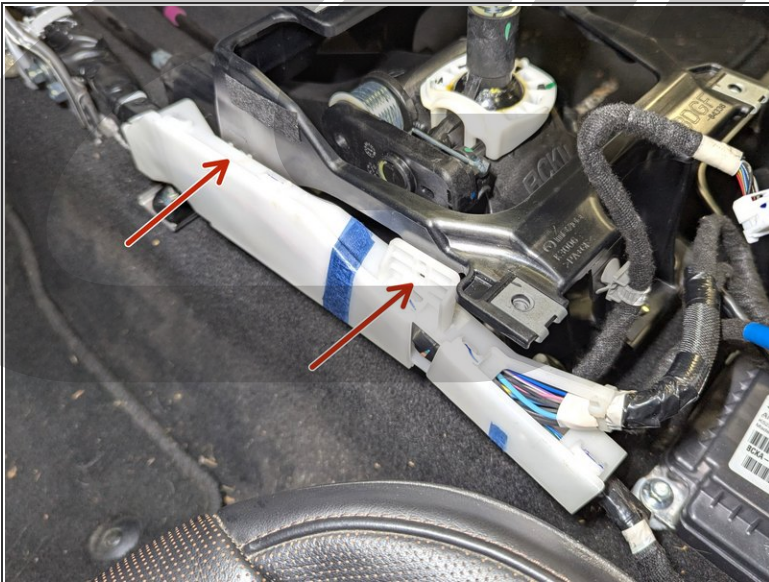
- Place the shifter back over the studs and line up the bushings, making sure that the step in the bushing goes into each of the 4 mounting locations in the shifter
- Place the flat washers with the CS logo on the 4 studs
- Reinstall the four 12mm nuts and tighten to 14 ft-lbs

Step 17 — Reinstall the Console Bracket



- Place the console bracket back into position and reinstall the three 10mm nuts and tighten down to 8 ft-lbs

Step 18 — Reinstall the Wiring Harness



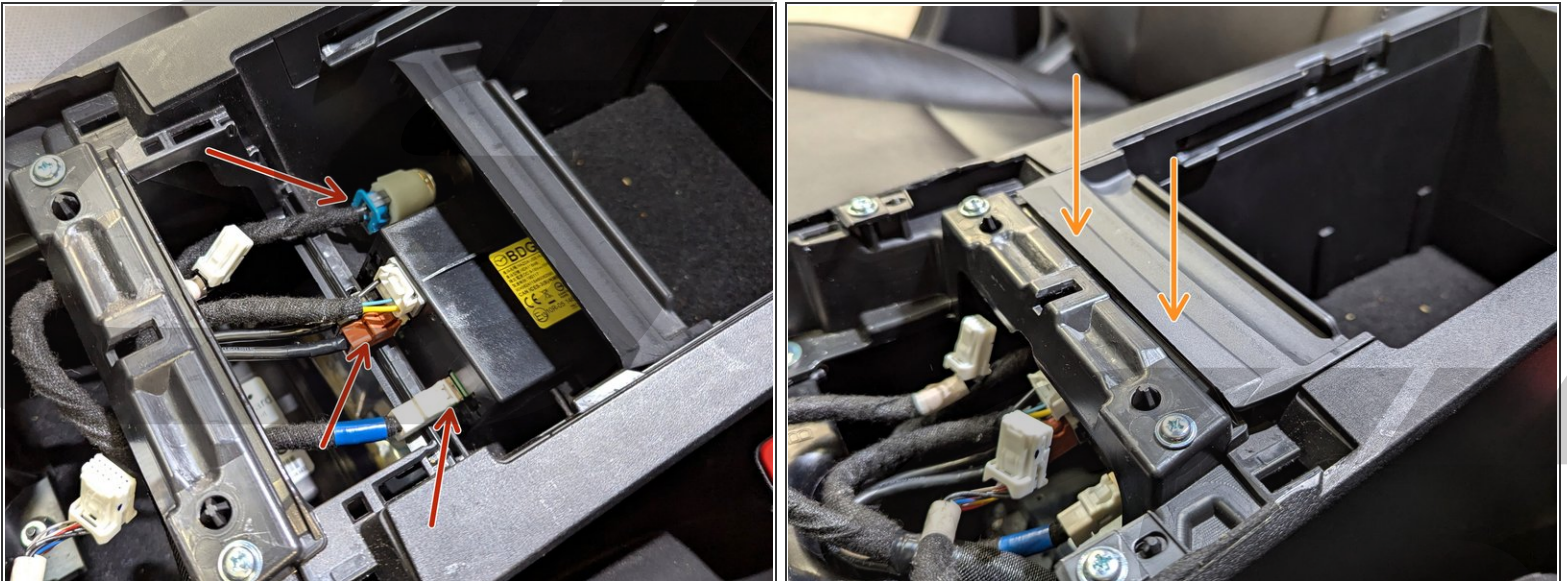
- Insert the wiring harness clips back into the console bracket
- Repeat the same step for the other wiring harness shown

Step 19 — Reinstall the Console



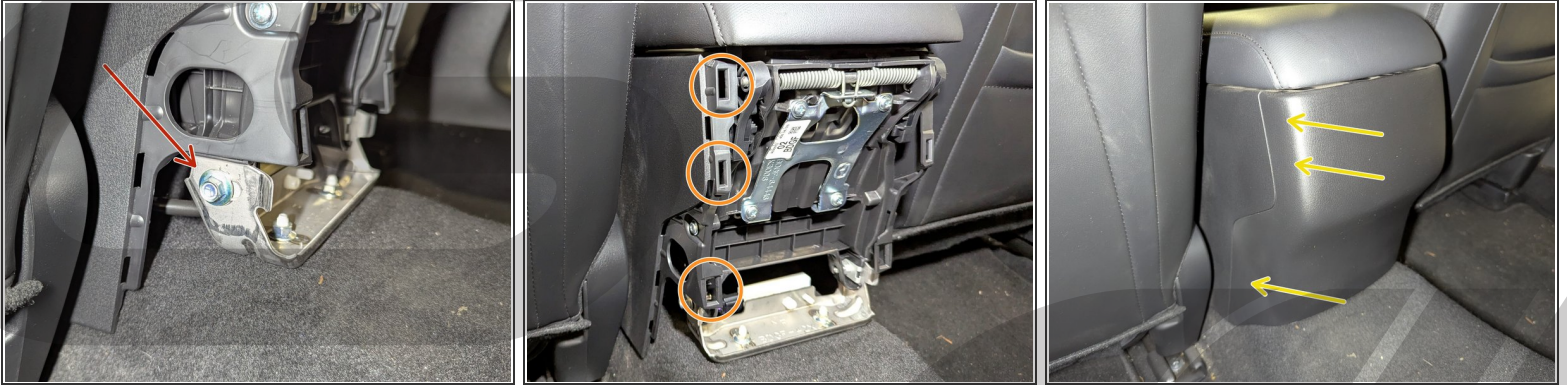
- Set the console back into position and move it towards the front of the car to reattach the clips shown
- Install the six 10mm bolts circled and tighten to 8 ft-lbs
- Reinstall the piece of carpet that goes into the bottom of the storage compartment

Step 20 — Reinstall the USB Panel



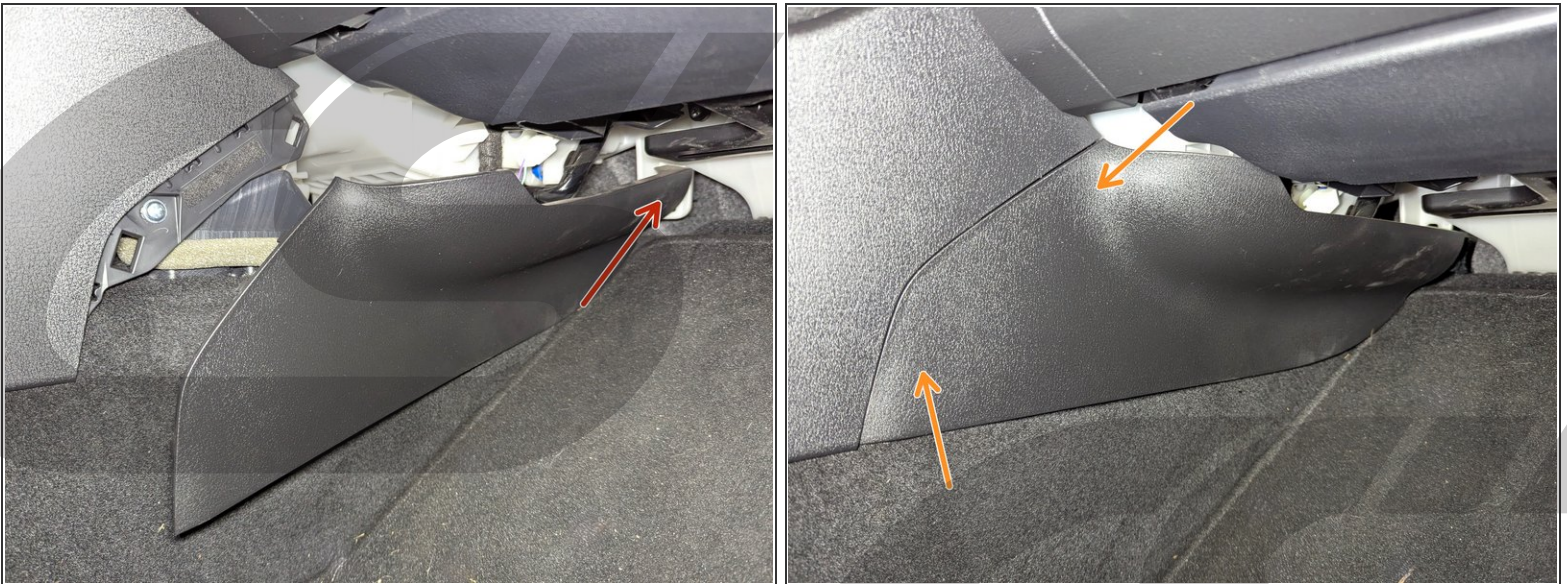
- Plug the 5 connectors back into the USB panel
- Line up the clips and press down to secure it back into position

Step 21 — Reinstall the Rear Console Panel



- Place the two 10mm bolts back into the bracket and tighten to 8 ft-lbs
- Line up the clips in the rear console panel with the slots circled, repeating on the opposite side
- Push forward on the panel on each side in the locations shown to secure it

Step 22 — Reinstall the Passenger's Side Panel



- Insert the end of the passenger's side panel into the slot
- Line up the clips and press in the locations shown to secure them

Step 23 — Reinstall the Driver's Side Panel



- Insert the end of the driver's side panel into the slot
- Line up the clips and press in the locations shown to secure them

Step 24 — Reinstall the Cup Holder



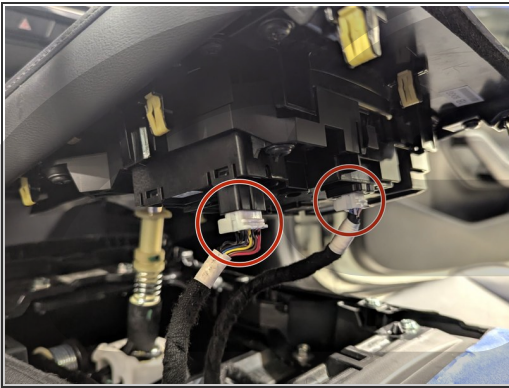
- Place the cup holder into position lining up the clips and push down in the locations shown to secure it

Step 25 — Reinstall the Front Console Panel



- Set the front console panel into position and line up the clips on the edges then push in the locations shown

Step 26 — Reinstall the Shift Panel



- Place the shift panel back into position and begin with plugging in the two connectors
- Align the front tabs and push in the area shown on both sides of the panel to secure them
- Align the tabs on the edges of the panel and push down to secure them
- Place the boot back over the shifter

Step 27 — Reinstall the Shift Knob



- Install the shift knob onto the shifter and tighten until it meets up with the shift boot and is snug

Step 28 — Installation Complete



- This completes your installation of the CorkSport Performance Shifter Bushings!
- Contact us with any questions or concerns at sales@corksport.com or (360) 260-2675.
- Please leave a review here: <https://corksport.com>
- Share your experience using #CorkSport on Instagram, Facebook, and Twitter.