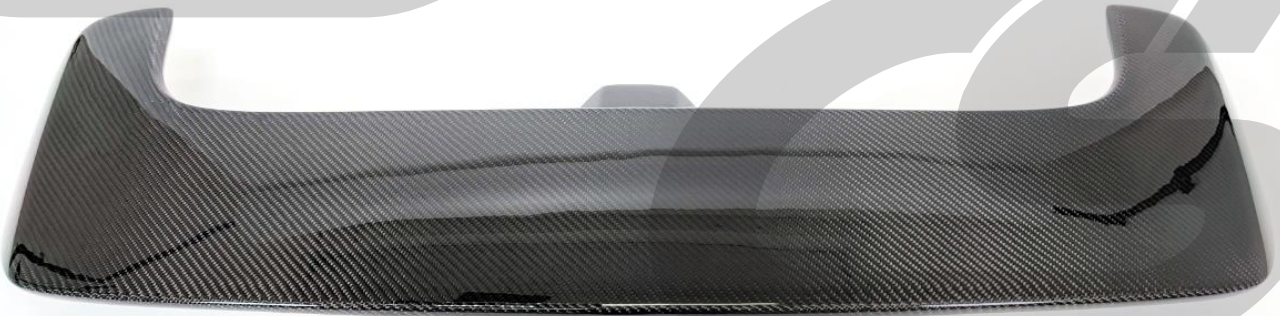


CorkSport
MAZDA PERFORMANCE

INSTALLATION INSTRUCTIONS



CORKSPORT Carbon Fiber Spoiler

2007-2009 Mazdaspeed 3

PART #: AXE-8-821-10

Need Help With Your Installation? Call (360)260-CORK



*We absolutely, positively,
deliver - every time.*

CORKSPORT.COM

PAGE 1



CORKSPORT Carbon Fiber Spoiler

2007-2009 Mazdaspeed 3

PRODUCT DESCRIPTION:

Thank you for purchasing a CorkSport Carbon Fiber Spoiler for your Mazdaspeed3. Add some extra flare to your speed with the iconic look of carbon fiber. The CS Carbon Fiber Spoiler installs just like the OEM unit, so no additional holes or modifications are required!

Please let us know your feedback of the CorkSport Carbon Fiber Spoiler by submitting a review at: <https://corksport.com/>

PRE-INSTALLATION NOTES:



These instructions were written for reference only and the use of a factory service manual is recommended.



Each carbon fiber spoiler is hand-built, therefore each one may have slight imperfections such as a wave in the weave, tiny bubbles, and small clear coat blemishes. If not satisfied with your product, contact us!



These instructions were written using a 2007 Mazdaspeed 3. Other years will be identical.

MATERIALS & TIME:

GENERAL INFO:



Time Est:
1hr



Difficulty:
2/5



CEL:
No


PARTS LIST:


- One (1) CorkSport Carbon Fiber Spoiler


TOOLING LIST:

- Needle Nose Pliers
- Small Flathead Screwdriver
- Scissors
- 10mm Socket (1/4" or 3/8")
- Ratchet (1/4" or 3/8")
- 4" Extension (1/4" & 3/8")
- Torque Wrench

ORDER OF OPERATIONS & TABLE OF CONTENTS:

-  **OEM SPOILER REMOVAL**
Section 1: Removing the OEM Spoiler Pg. 4-6

-  **CORKSPORT CARBON FIBER SPOILER ASSEMBLY**
Section 2: Applying Double Sided Tape Pg. 6-7
Section 3: Wiring the Third Brake Light Pg. 7-8

-  **CORKSPORT CARBON FIBER SPOILER INSTALLATION**
Section 4: Installing the CS Spoiler Pg. 8-11

DETAILED INSTRUCTIONS:

1. Removing the OEM Spoiler

- a) Remove the center trim section by pulling towards you in the locations circled in **Figure 1a**.



Figure 1a

- b) Remove the third brake light electrical connector that is located in the hatch as shown in **Figure 1b**.



Figure 1b

- c) Unplug the connector by pressing down on the tab that is circled in **Figure 1c** and then pull outwards.

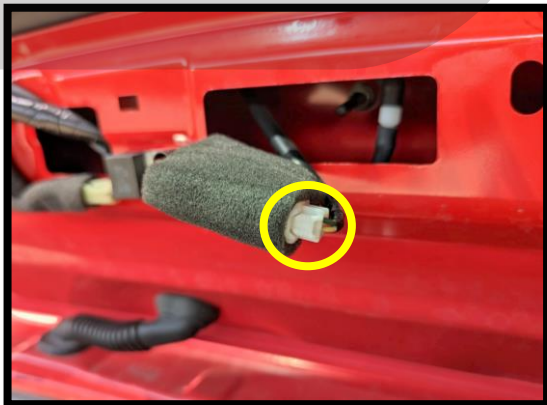


Figure 1c

DETAILED INSTRUCTIONS:

1. Removing the OEM Spoiler (Cont.)

- d) Remove the plastic clip shown in **Figure 1d** by using needle nose pliers or a small flat blade screwdriver to depress the two tabs on the clip while pushing up.

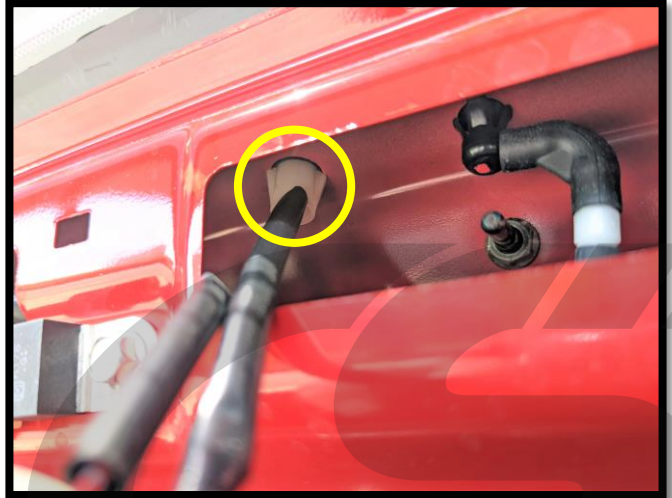


Figure 1d

- e) Remove the 10mm nut circled in yellow in **Figure 1e** by using a 10mm socket and ratchet. Make sure to not drop the nut as it is being removed from the stud.

- f) Release the tabs on the plastic clip circled in green in **Figure 1e** using either the needle nose pliers or small flat blade screw driver. The plastic clip will not be able to be fully removed, only released and pushed out slightly.

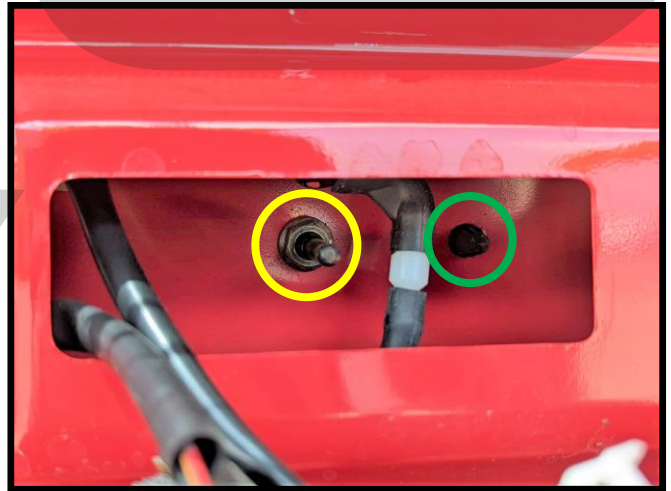


Figure 1e



Figure 1f

- g) Remove the four 10mm bolts securing the OEM spoiler shown in **Figure 1f**.



There are 2 additional clips that hold the spoiler to the hatch, but when removing the last bolt, hold the spoiler to ensure it does not separate from the hatch in case those clips are missing or broken.

DETAILED INSTRUCTIONS:

1. Removing the OEM Spoiler (Cont.)

- h) Lift up on each side of the spoiler to release the two clips. **Figure 1g** shows the location of where these clips are located when the spoiler has been removed.

NOTE These clips are prone to break when removing and are not necessary for the installation of the CS Carbon Fiber Spoiler.

NOTE Using a heat gun or hairdryer to warm underneath the corners of the spoiler can help to soften the clips slightly for easier removal.



Figure 1g

2. Applying Double Sided Tape

- a) Place a towel down on a flat surface and position the spoiler as shown in **Figure 2a**.
- b) Take the included double sided tape and apply it around each base of the spoiler as shown in **Figure 2c**. Leave the backing on the tape as it will be removed in a later step.

NOTE install the double sided tape roughly 1/8" back for the edges of the base so it is not visible when installed.

NOTE Leaving a small gap in the tape as shown with the **blue line** in **Figure 2c** will help water escape quicker after washing your car.



Figure 2a



Figure 2b



Figure 2c

DETAILED INSTRUCTIONS:

2. Applying Double Sided Tape (Cont.)

- c) Continue to install the double sided tape to the center standoff on the spoiler as shown in **Figure 2e**. Leave the red backing on the tape as it will be removed in a later step.



install the double sided tape roughly 1/8" back for the edges of the base so it is not visible when installed.

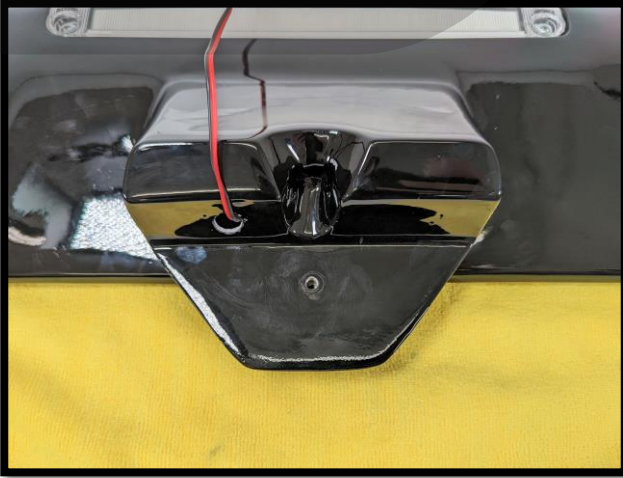


Figure 2d

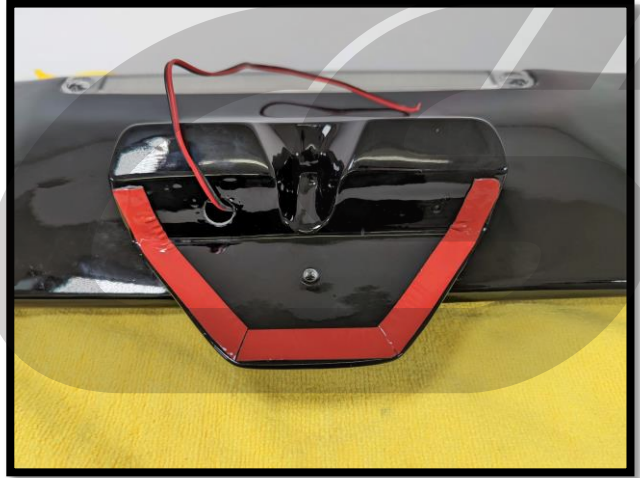


Figure 2e

3. Wiring the Third Brake Light

- a) Locate the white connector on the OEM spoiler as shown in **Figure 3a**.



Figure 3a

DETAILED INSTRUCTIONS:

3. Wiring the Third Brake Light (Cont.)

- b) Using a small flathead screwdriver, **de-pin the two wires from the connector** as seen in **Figure 3b**. If you would like to keep the connector on the OEM spoiler, you can use your preferred method to wire the third brake light after the spoiler is installed.



The **blue line** in **Figure 3b** represents the locking tab that holds the pin into the connector. Push down the end of the tab by putting a small screwdriver in the right side of the connector and prying down while pulling the wire to release it from the connector.

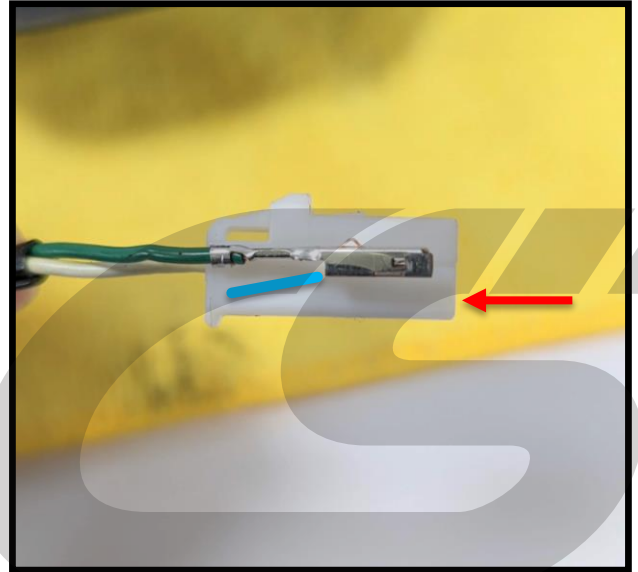


Figure 3b

4. Installing the CS Spoiler

- a) **Locate the two holes that are circled in Figure 4a** that are next to the rear wiper spray nozzle on top of the hatch.
- b) **Place the 2 included foam circles over the holes as seen in Figure 4b**. Make sure to center them during installation to ensure a good seal.
- c) **Use a small screwdriver or knife to cut a small hole in the left foam piece as shown in Figure 4c** so the third brake light wiring can be passed through. **The blue backing tape can be removed from the foam.**

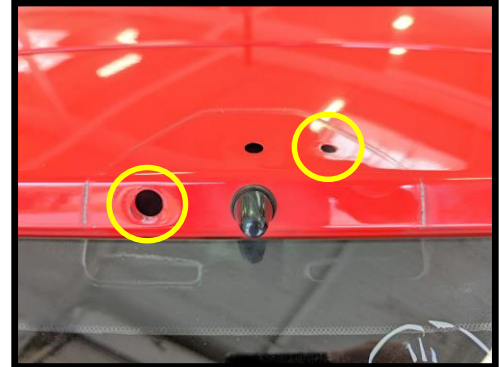


Figure 4a

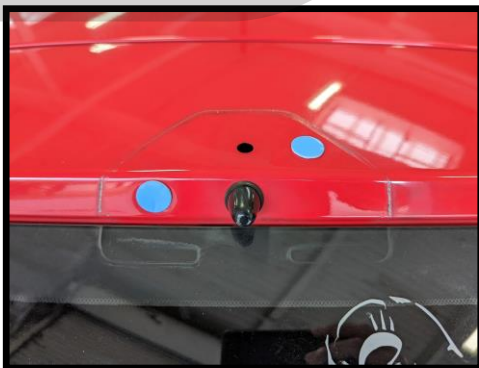


Figure 4b

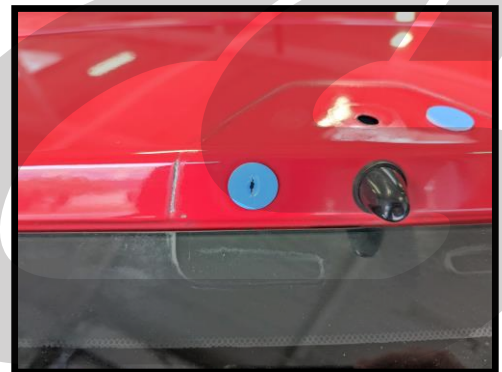


Figure 4c

DETAILED INSTRUCTIONS:

4. Installing the CS Spoiler (Cont.)

Optional: Place the spoiler on the hatch to check the location of the double sided tape and adjust as necessary if the tape is not making contact with the hatch or is visible.

- a) **Start to peel the edges of the backing on the double sided tape off as shown in Figure 4d** and point the removed backing towards the outside. This is to provide access to the backing once it is set on the hatch. Do this to all double sided tape sections on the spoiler.



Peel the edges of the tape on the inside of the wing more so it is easier to grab when placed on the hatch. You can also fully remove the backing of the smaller sections of double sided tape.

- b) **Using either a friend or an object, prop up the hatch halfway. Place the spoiler on the hatch temporarily as shown in Figure 4e**, making sure to **feed the wiring trough the hole in the foam installed earlier**. Install one of the included **M6x12mm bolts into each side of the spoiler** as seen in **Figure 4f** to ensure the spoiler does not fall. Install the bolts only a few turns to give more room when removing the backing on the double sided tape.
- c) **Remove the backing on the double sided tape the rest of the way** ensuring that the wing is positioned evenly on both sides and all the bolt holes line up with the holes in the hatch.



Figure 4d

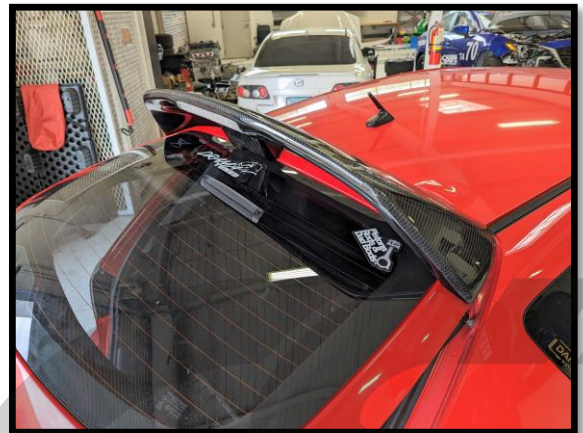


Figure 4e



Figure 4f

DETAILED INSTRUCTIONS:

4. Installing the CS Spoiler (Cont.)

- d) Install the remaining two M6x12mm bolts and tighten all four bolts circled in **Figure 4g** until flush.
- e) Install the center M6x16mm bolt with both the steel and rubber washer as shown in **Figure 4g**.
- f) After all bolts are installed, tighten them down until snug (3-5 ft-lb or 36-60 in-lb).

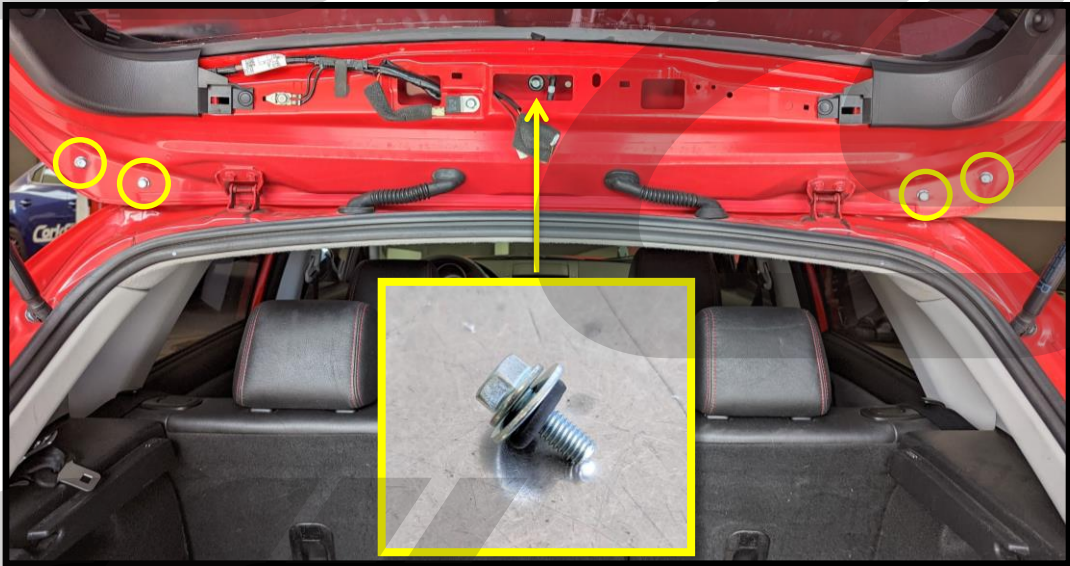


Figure 4g

- g) Reinstall the OEM connector that was removed earlier with the red wire on the left side of the connector and the black wire on the right side as shown in **Figure 4h**. The pre-installed pins will lock into place in the OEM connector. The red and black wires match with the wiring already on the vehicle.
- h) Connect the third brake light connectors together as seen in **Figure 4i** and place them back in the hatch.

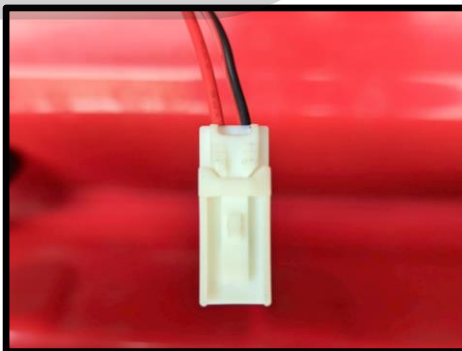


Figure 4h



Figure 4i

DETAILED INSTRUCTIONS:

4. Installing the CS Spoiler (Cont.)

- a) Reinstall the center trim piece as shown in **Figure 4j**.



Figure 4j



This completes the installation of your CorkSport Carbon Spoiler. Enjoy the iconic look of carbon fiber on your Mazdaspeed!

WHAT'S NEXT?

CorkSport Camshafts

The CorkSport Mazdaspeed Performance Camshafts are developed with the latest design, manufacturing, and casting technologies and ground to CNC precision for the best performance for your Mazdaspeed. Near factory idling cams for the daily driver and even the aggressive track driver bringing improvement in throttle response, horsepower, and torque to your Mazdaspeed.



CorkSport 13" Big Brake Kit

The Stage 2 CorkSport 13" Big Brake Kit for Mazdaspeed 3 provides a drastic improvement to braking by offering improvements to each component in the system. Larger rotors, 4-piston calipers, stainless steel brake lines, upgraded pads, and everything you need to install on your Speed 3 is included in this kit. If the CorkSport Big Brake Caliper Kit was not enough for you and your MS3, look no further than the CorkSport 13" BBK.

Also available for Mazdaspeed 6!



CorkSport Front Mount Intercooler Kit

Cool down your boost air temperatures without compromise with the CorkSport Front Mount Intercooler Kit with a small or large intercooler. Featuring all new piping for better fitment and performance, the CorkSport Front Mount Intercooler Kit comes standard with the high flow small core or the optional big core with crash bar. Whether you are sporting a few bolt-ons or a ground breaking big turbo build, this FMIC Kit has the performance to support your goals.

