

## CorkSport Rear Torsion Bar 2011 Mazda 2



M  
Z  
2  
-  
3  
-  
0  
7  
0



**WARNING:** The edges of the exhaust tunnel heat shield can be very sharp. Please use mechanics gloves at all times when near the heat shield.



**WARNING:** Thoroughly read the precautions and instructions that come with your Floor Jack and Jackstands as well as your vehicle's owners manual for appropriate jacking methods and jacking / support points. Always double up support on a vehicle - Jack Stands and Floor Jack /etc.



**NOTE:** When under the car, you should be wearing mechanics gloves or other form of hand protection as well as ANSI Approved Safety Glasses.



**NOTE:** These instructions were written for reference only and the use of a factory service manual is recommended. Please read these instructions thoroughly prior to starting installation.

Part Number: Mz2-3-070 Time Estimate: 20-30 min. Wrench Rating: 1/5	Model Mazda 2	Year 2011	Trim All
<b>TOOLING LIST:</b> 3/8 Drive Ratchet 19mm or 3/4" Socket 19mm or 3/4" Wrench Jack Stands Floor Jack Mechanics Gloves		<b>PARTS LIST:</b> CorkSport Black Powder Coated Rear Torsion Bar Qty 2: 1/2"-20 x 2 1/2" Grade 8 Bolts Qty 2: 1/2"-20 Grade 8 Locknuts Qty 2: 1/2" Flat Washers	



For help with installation, call 360-260-CORK (2675)

# Installation Instructions:

## CorkSport Rear Torsion Bar

### 2011 Mazda 2

#### 1: Support Car on Floor Jack/Jackstands or Lift

Use a floor jack and jackstands to gain access to the underside of the vehicle.

⚠ Always refer to the floor jack and jackstand manufacturers instructions as well as the factory owners manual for your vehicle to determine jacking points and support points. Alternately, use an automotive lift to gain access to the underside of the vehicle. Redundant support mechanisms are recommended.

#### 2: Install CorkSport Rear Torsion Bar

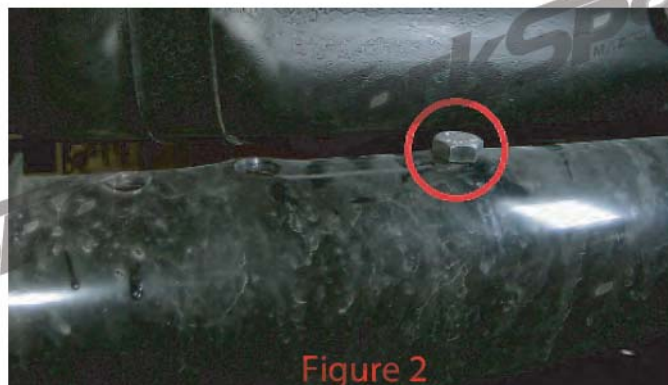
A) Locate the two (2) inner bolt holes on the rear torsion member of the chassis (red circles in Figure 1).



B) From the top-side of the cross member, insert the driver's side bolt in to the inner-most hole (red circle in Figure 2).

C) Repeat step B for the passenger side hole with the second bolt.

D) Slide the CorkSport Rear Torsion Bar on to the two bolts sticking through the holes in the cross member and install one (1) washer and then one (1) locknut on to each bolt hand tight so that the rear torsion bar is held in place.



⚠ Note: The Rear Torsion Bar is not directional, so it cannot be installed the wrong way.

E) On one side of the bar, using the 19mm (or 3/4") wrench to hold the bolt in place, use the 19mm (or 3/4") ratcheting wrench to tighten the locknut to 60 ft-lbs of torque. Repeat this for the other side.

E) Your CorkSport Rear Torsion Bar is now installed and should look like Figure 3 below.

